

GENERAL TECHNICAL RULES FOR PARTICIPANTS

For those selected to take part in the Contests

(Technical plans attached, please download this information and print it.)

1-. Each participant will have an hour and a half in the theatre (1h 30"), for the recording of lighting memories, sound check and general technical rehearsal. Please be punctual, as the times allocated to each participant will be strictly adhered to.

Prior to the competition, an e-mail address will be set up for technical doubts and queries: tecnica@masdanza.com, which will be checked by the Theatre's Technical Manager, who will control the lighting and sound desk. This e-mail address will be active from **15th September**.

2-. The entire lighting plant may not be modified in any way, neither the number of spotlights, nor their position or orientation. With the exception of the street lights, where only the colour can be modified, placing for that piece a colour filter that the participant must bring, taking into account the measurements of the light to filter.

You must understand that this is a competition, due to the technical limitations of the theatre and that all participants must have the same opportunities, special lights that are not in our technical plan will NOT be assigned.

Participants who include more lighting material in their piece or have their own design (even if they have sent it in the video) will have to adapt to these conditions. In the case of pieces with lighting scenographic elements, the organisation, without guaranteeing their inclusion, will try to make it possible to use them.

The backdrop will be a black curtain or a cyclorama with the possibility of backlighting at the choice of each company. In no case will there be support behind either of the two.

3-. The light control table allows to record and reproduce all the effects previously rehearsed. But to speed up the work, it is necessary to fill in the attached effects sheet, as well as all the audios (quality format such as .wav) and send it by e-mail to tecnica@masdanza.com, before **September 30th**.

4-. MASDANZA will provide a technician to reproduce the effects in the performances according to what has been done in the technical rehearsals.

5-. There is no limitation for lighting effects, however, it is recommended to the participants, due to the time available, to limit the lighting effects as much as possible.

6.- We remind you that, according to the rules of this competition, the scenographic elements must be easy and quick to install, and that there must not be any scenographic incorporation after the sending of the video that we have seen.

You must also bear in mind that the time for the installation and dismantling of the scenographic material will run within the time allotted for the rehearsal of each participant.

7.- You must bring the audio used in the piece on a pendrive and the effects sheet, as a security measure, apart from sending them previously by e-mail.

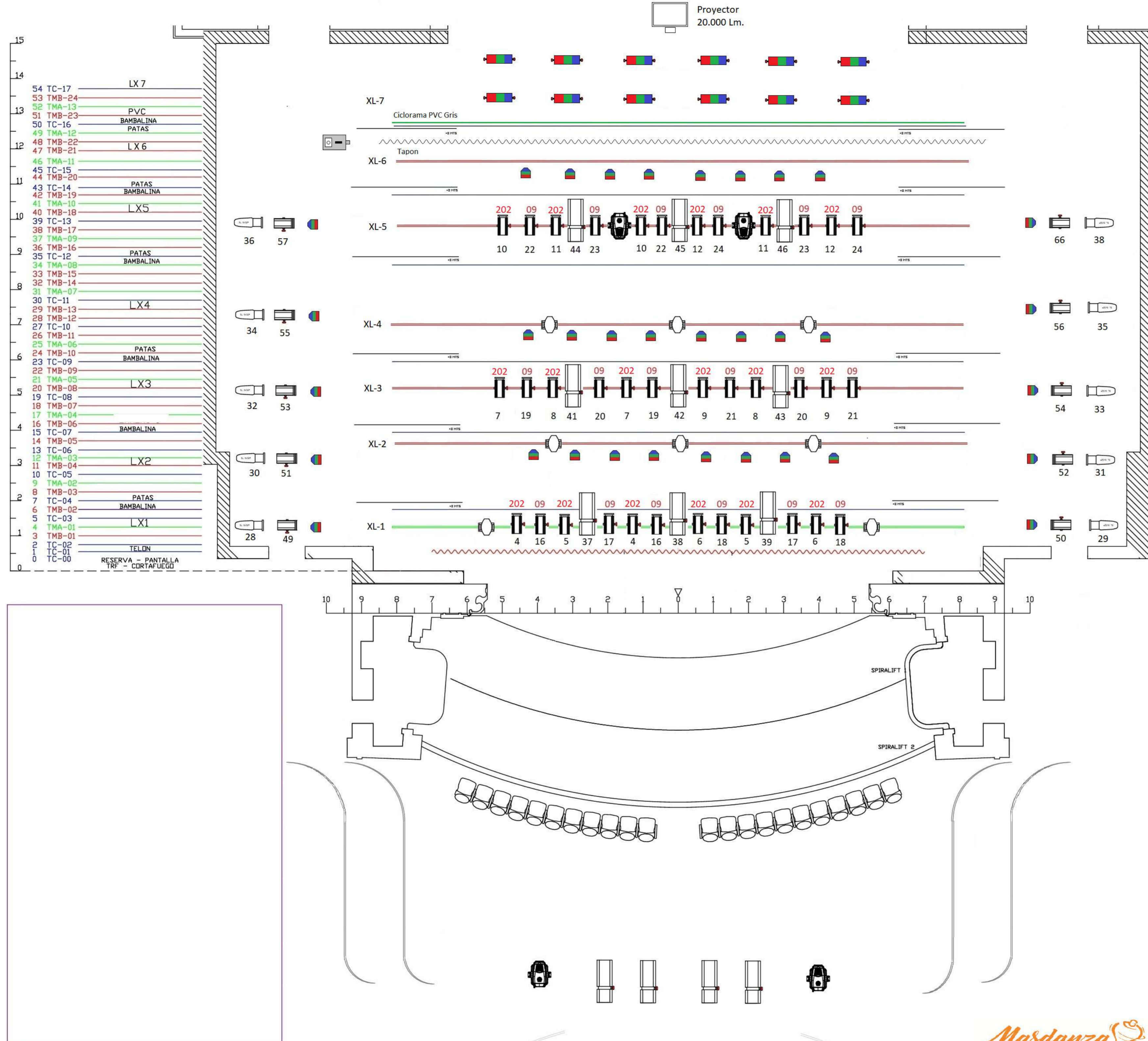
8.- In the event that the piece includes video projection, it is necessary to inform the organisation, which will decide on the basis of the participant's preference and the means available in what format or device it will be used. The theatre's technical team will be at your disposal at all times for any questions or needs you may have.

The organisation reserves the right to modify the technical conditions at any time, (lighting plan, regulations...) always with the aim of guaranteeing the highest quality in all the shows and fairness within the competition.

If you have any queries, please contact us by e-mail: tecnica@masdanza.com

Best regards and best of luck!

David Barahona-Herrera
Production Manager
MASDANZA
www.masdanza.com



Proyector
20.000 Lm

LEYENDA ILUMINACION

SÍMBOLO	DESCRIPCIÓN	UDS.
	RJ 306 LPC IKW (40)	36
	RJ 306 LF IKW (20)	0
	RJ 329HPC 2KW (12)	0
	RJ 710SX 2KW-10/25° (6)	0
	RJ 713SX 2KW-29/50° (12)	9
	RJ 61ISX IKW-II/26° (6)	0
	STRAND SL 600W-5° (6)	0
	STRAND SL 600W-23/50° (18)	0
	STRAND SL 600W-15/35° (24)	10
	PAR 64(5)-IKW	20
	PAR 64(2)-IKW	0
	PAR 64(1)-IKW	0
	PAN ORION ASIM. I KW (18)	0
	PAN IRIS ASIM. I KW (24)	0
	Panorama asimetrico Led Zenyt 600	12
	STRAND CANTATA 1.2 (8)	X
	RJ 714SX 2KW-15/40° (24)	0
	RJ 613SX IKW-28/54° (17)	X
	ETC SFZoom 750W-25/50° (X)	X
	ETC SFZoom 750W-15/30° (X)	X
	Elation ARENA 7X30w RWBW 7 a 40°	34
	Ayrton Ghibli o XProfile	4
	Eurus	8
	Maquina de Niebla Hazer	1

28 FESTIVAL INTERNACIONAL DE DANZA DE CANARIAS

QUE TAL ESTAS PRODUCCION

Del 18 al 21 de octubre de 2023

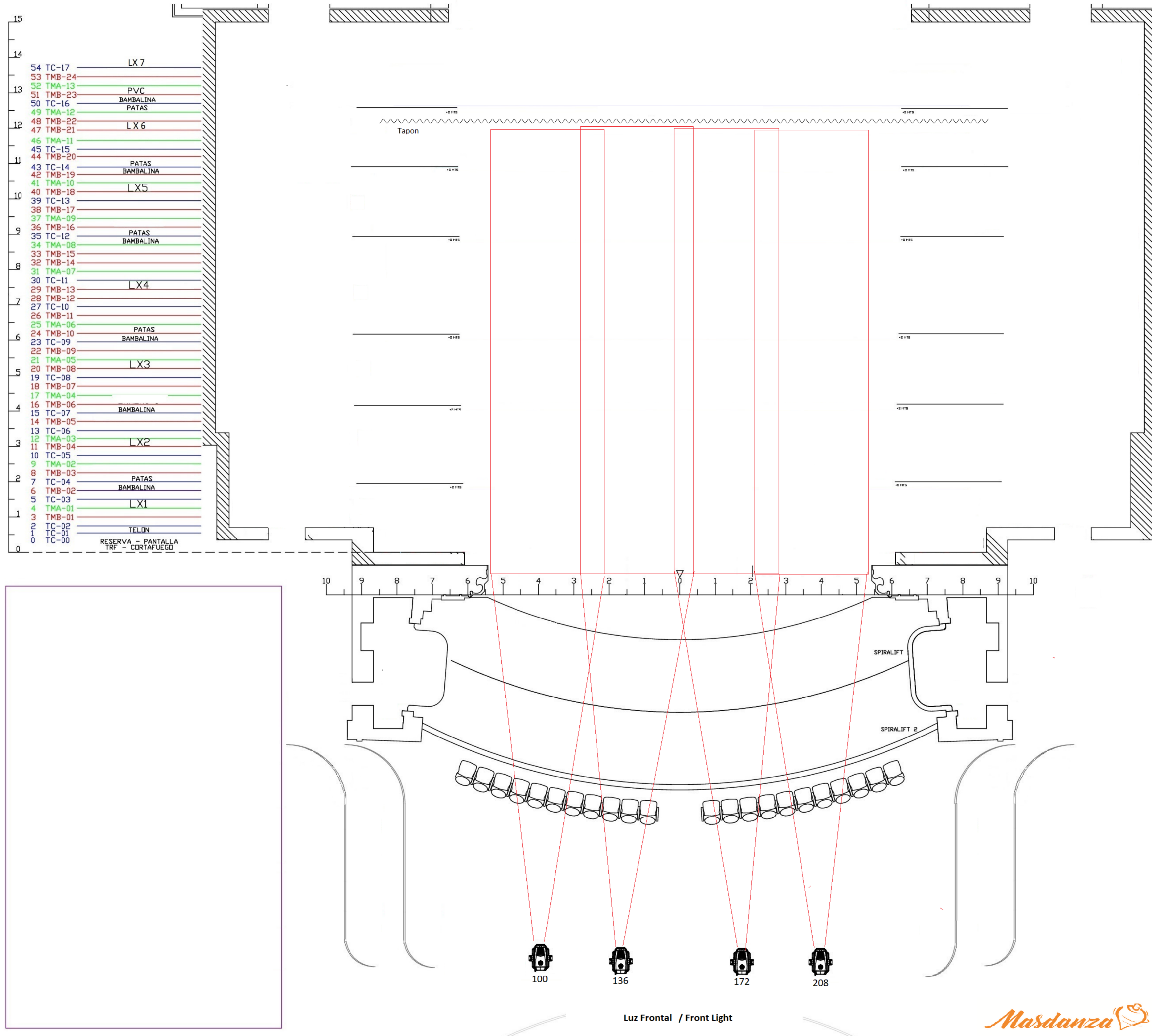
Teatro Perez Galdos

Diseño: Rafael Morán

Operador: Grace Morales



Masdanza



- 54 TC-17
- 53 TMB-24
- 52 TMA-13
- 51 TMB-23
- 50 TC-16
- 49 TMA-12
- 48 TMB-22
- 47 TMB-21
- 46 TMA-11
- 45 TC-15
- 44 TMB-20
- 43 TC-14
- 42 TMB-19
- 41 TMA-10
- 40 TMB-18
- 39 TC-13
- 38 TMB-17
- 37 TMA-09
- 36 TMB-16
- 35 TC-12
- 34 TMA-08
- 33 TMB-15
- 32 TMB-14
- 31 TMA-07
- 30 TC-11
- 29 TMB-13
- 28 TMB-12
- 27 TC-10
- 26 TMB-11
- 25 TMA-06
- 24 TMB-10
- 23 TC-09
- 22 TMB-09
- 21 TMA-05
- 20 TMB-08
- 19 TC-08
- 18 TMB-07
- 17 TMA-04
- 16 TMB-06
- 15 TC-07
- 14 TMB-05
- 13 TC-06
- 12 TMA-03
- 11 TMB-04
- 10 TC-05
- 9 TMA-02
- 8 TMB-03
- 7 TC-04
- 6 TMB-02
- 5 TC-03
- 4 TMA-01
- 3 TMB-01
- 2 TC-02
- 1 TC-01
- 0 TC-00

LEYENDA ILUMINACION		
SÍMBOLO	DESCRIPCIÓN	UDS.
	RJ 306 LPC IKW (40)	36
	RJ 306 LF IKW (20)	0
	RJ 329HPC 2KW (12)	0
	RJ 710SX 2KW-10/25° (6)	0
	RJ 713SX 2KW-29/50° (12)	0
	RJ 611SX IKW-II/26° (6)	0
	STRAND SL 600W-5° (6)	0
	STRAND SL 600W-23/50° (18)	0
	STRAND SL 600W-15/35° (24)	10
	PAR 64(5)-IKW	20
	PAR 64(2)-IKW	0
	PAR 64(1)-IKW	0
	PAN ORION ASIM. I Kw (18)	0
	PAN IRIS ASIM. I Kw (24)	0
	Panorama asimetrico Led Zenyt 600	12
	STRAND CANTATA 1.2 (8)	X
	RJ 714SX 2KW-15/40° (24)	9
	RJ 613SX IKW-28/54° (17)	X
	ETC SFZoom 750W-25/50° (X)	X
	ETC SFZoom 750W-15/30° (X)	X
	Elation ARENA 7X30w RWBW 7 a 40°	34
	Ayrton Ghibli o XProfile	6
	Eurus	8
	Maquina de Niebla Hazer	2

28 FESTIVAL INTERNACIONAL DE DANZA DE CANARIAS

QUE TAL ESTAS PRODUCCION

Del 18 al 21 de octubre de 2023

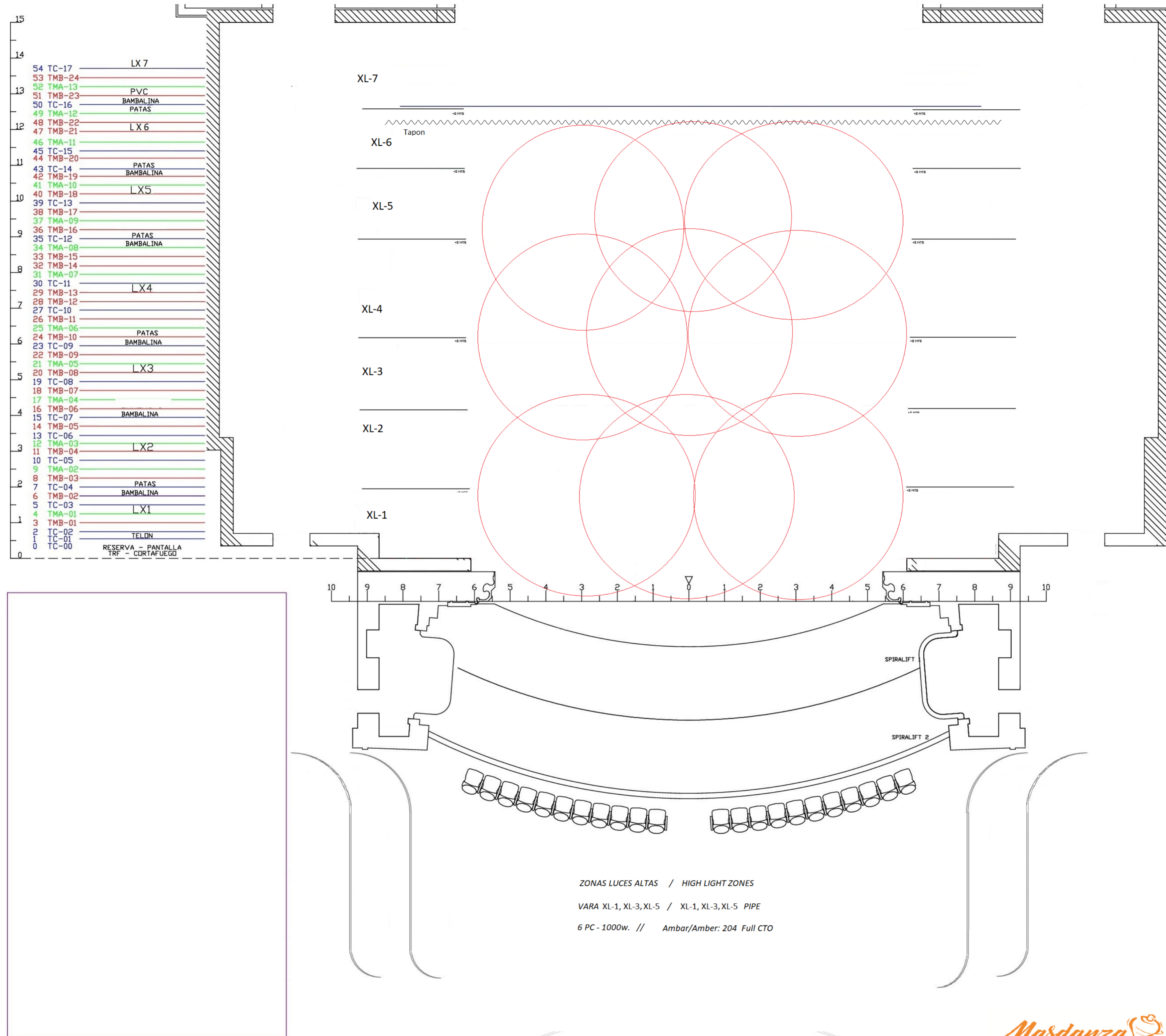
Teatro Perez Galdos

Diseño: Rafael Morán

Operador: Grace Morales

Masdanza

Luz Frontal / Front Light



- 54 TC-17
- 53 TMB-24
- 52 TMA-13
- 51 TMB-23
- 50 TC-16
- 49 TMA-12
- 48 TMB-22
- 47 TMB-21
- 46 TMA-11
- 45 TC-15
- 44 TMB-20
- 43 TC-14
- 42 TMB-19
- 41 TMA-10
- 40 TMB-18
- 39 TC-13
- 38 TMB-17
- 37 TMA-09
- 36 TMB-16
- 35 TC-12
- 34 TMA-08
- 33 TMB-15
- 32 TMB-14
- 31 TMA-07
- 30 TC-11
- 29 TMB-13
- 28 TMB-12
- 27 TC-10
- 26 TMB-11
- 25 TMA-06
- 24 TMB-10
- 23 TC-09
- 22 TMB-09
- 21 TMA-05
- 20 TMB-08
- 19 TC-08
- 18 TMB-07
- 17 TMA-04
- 16 TMB-06
- 15 TC-07
- 14 TMB-05
- 13 TC-06
- 12 TMA-03
- 11 TMB-04
- 10 TC-05
- 9 TMA-02
- 8 TMB-03
- 7 TC-04
- 6 TMB-02
- 5 TC-03
- 4 TMA-01
- 3 TMB-01
- 2 TC-02
- 1 TC-01
- 0 TC-00

LEYENDA ILUMINACION		
SÍMBOLO	DESCRIPCIÓN	UDS.
	RJ 306 LPC IKW (40)	36
	RJ 306 LF IKW (20)	0
	RJ 329HPC 2KW (12)	0
	RJ 710SX 2KW-10/25° (6)	0
	RJ 713SX 2KW-29/50° (12)	0
	RJ 611SX IKW-II/26° (6)	0
	STRAND SL 600W-5° (6)	0
	STRAND SL 600W-23/50° (18)	0
	STRAND SL 600W-15/35° (24)	10
	PAR 64(5)-IKW	20
	PAR 64(2)-IKW	0
	PAR 64(1)-IKW	0
	PAN ORION ASIM. I Kw (18)	0
	PAN IRIS ASIM. I Kw (24)	0
	Panorama asimetrico Led Zenyt 600	12
	STRAND CANTATA 1.2 (8)	X
	RJ 714SX 2KW-15/40° (24)	9
	RJ 613SX IKW-28/54° (17)	X
	ETC SFZoom 750W-25/50° (X)	X
	ETC SFZoom 750W-15/30° (X)	X
	Elation ARENA 7X30w RWBW 7 a 40°	34
	Ayrton Ghibli o XProfile	6
	Eurus	8
	Maquina de Niebla Hazer	2

28 FESTIVAL INTERNACIONAL DE DANZA DE CANARIAS

QUE TAL ESTAS PRODUCCION

Del 18 al 21 de octubre de 2023

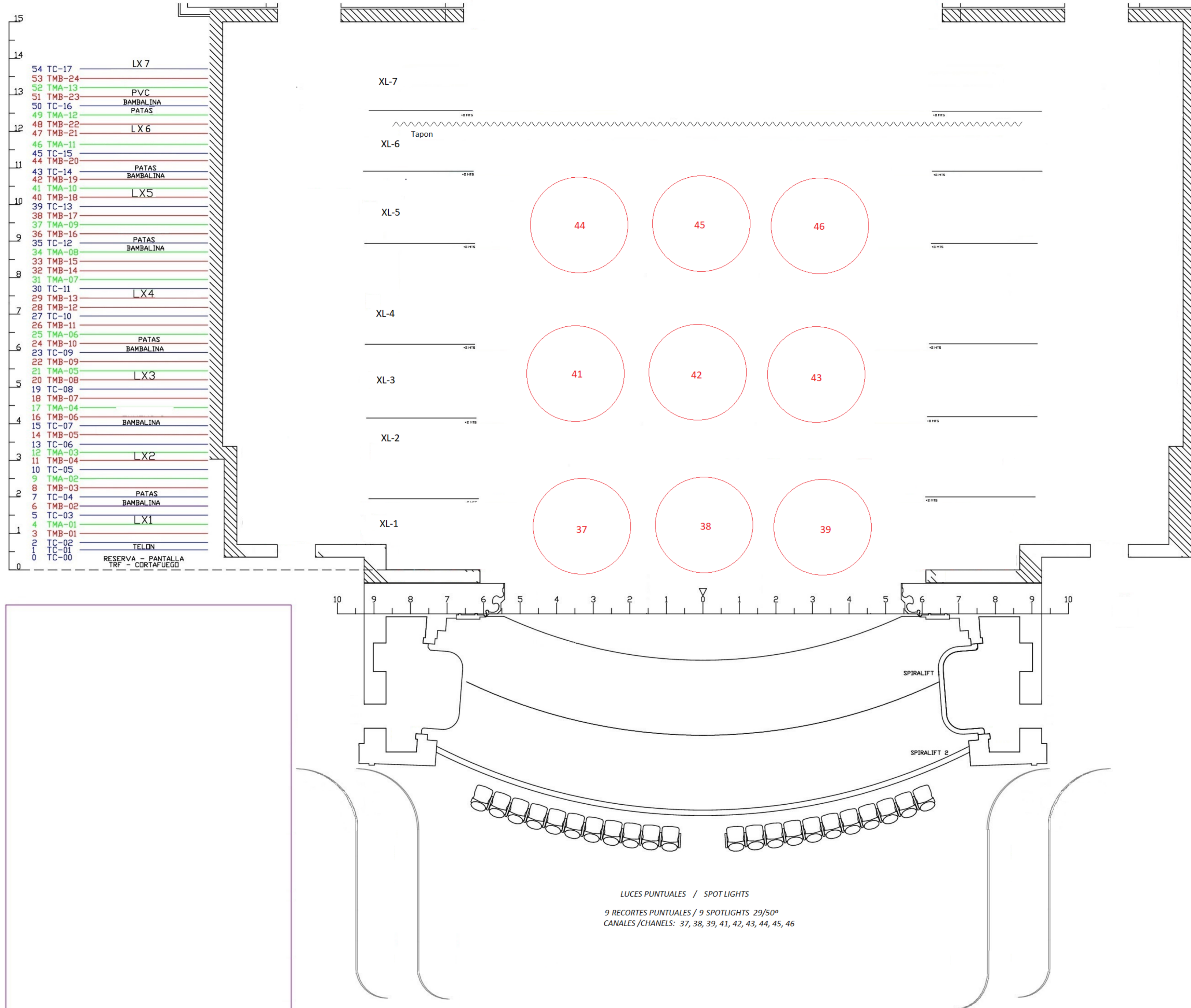
Teatro Perez Galdos

Diseño: Rafael Morán

Operador: Grace Morales

ZONAS LUCES ALTAS / HIGH LIGHT ZONES
 VARA XL-1, XL-3, XL-5 / XL-1, XL-3, XL-5 PIPE
 6 PC - 1000w. // Ambar/Amber: 204 Full CTO





LUCES PUNTALES / SPOT LIGHTS
 9 RECORTES PUNTALES / 9 SPOTLIGHTS 29/50°
 CANALES / CHANNELS: 37, 38, 39, 41, 42, 43, 44, 45, 46

LEYENDA ILUMINACION		
SÍMBOLO	DESCRIPCIÓN	UDS.
	RJ 306 LPC IKW (40)	36
	RJ 306 LF IKW (20)	0
	RJ 329HPC 2KW (12)	0
	RJ 710SX 2KW-10/25° (6)	0
	RJ 713SX 2KW-29/50° (12)	0
	RJ 611SX IKW-II/26° (6)	0
	STRAND SL 600W-5° (6)	0
	STRAND SL 600W-23/50° (18)	0
	STRAND SL 600W-15/35° (24)	10
	PAR 64(5)-IKW	20
	PAR 64(2)-IKW	0
	PAR 64(1)-IKW	0
	PAN ORION ASIM. I Kw (18)	0
	PAN IRIS ASIM. I Kw (24)	0
	Panorama asimetrico Led Zenyt 600	12
	STRAND CANTATA 1.2 (8)	X
	RJ 714SX 2KW-15/40° (24)	9
	RJ 613SX IKW-28/54° (17)	X
	ETC SFZoom 750W-25/50° (X)	X
	ETC SFZoom 750W-15/30° (X)	X
	Elation ARENA 7X30w RWBW 7 a 40°	34
	Ayrton Ghibli o XProfile	6
	Eurus	8
	Maquina de Niebla Hazer	2

28 FESTIVAL INTERNACIONAL DE DANZA DE CANARIAS

QUE TAL ESTAS PRODUCCION

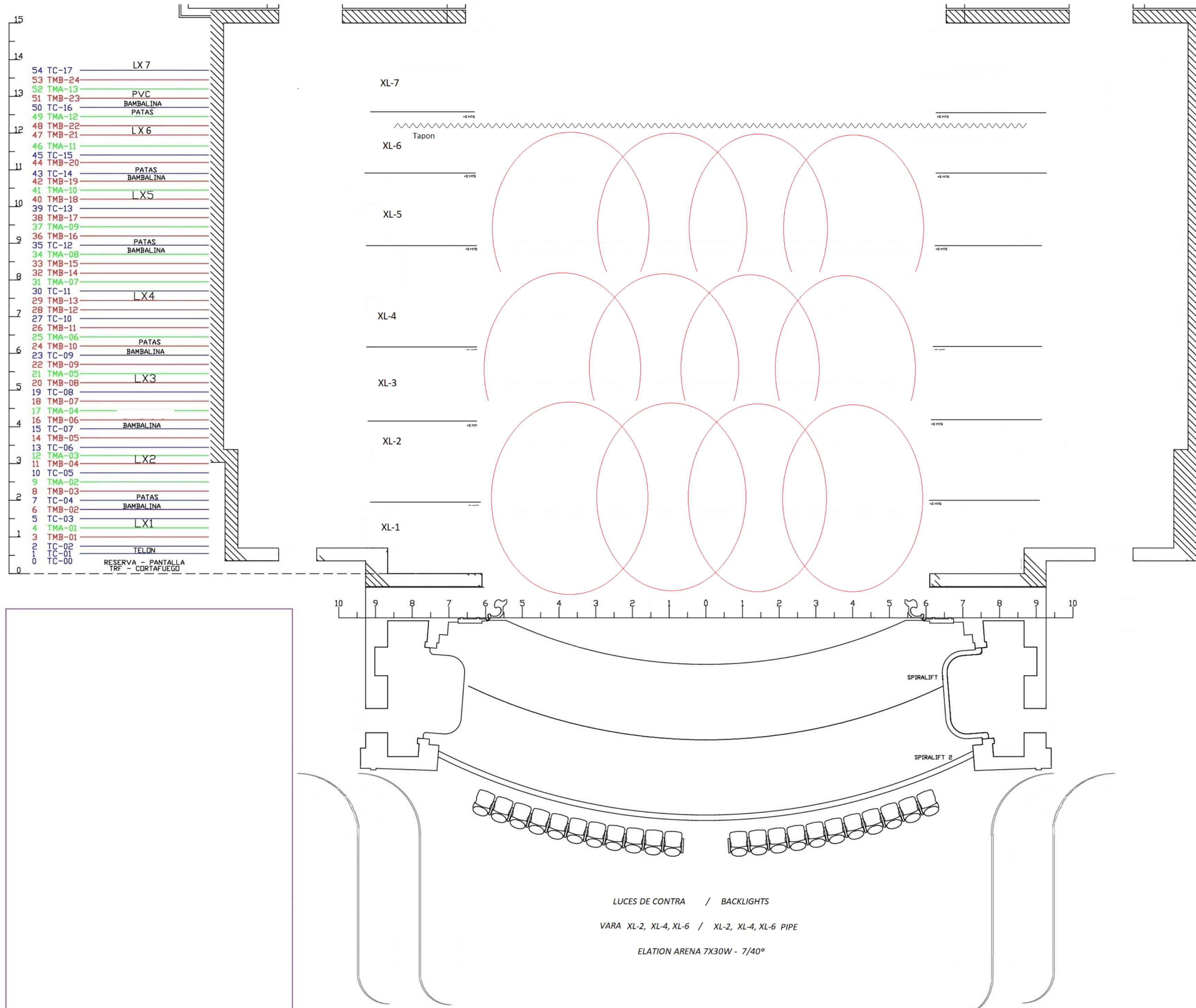
Del 18 al 21 de octubre de 2023

Teatro Perez Galdos

Diseño: Rafael Morán

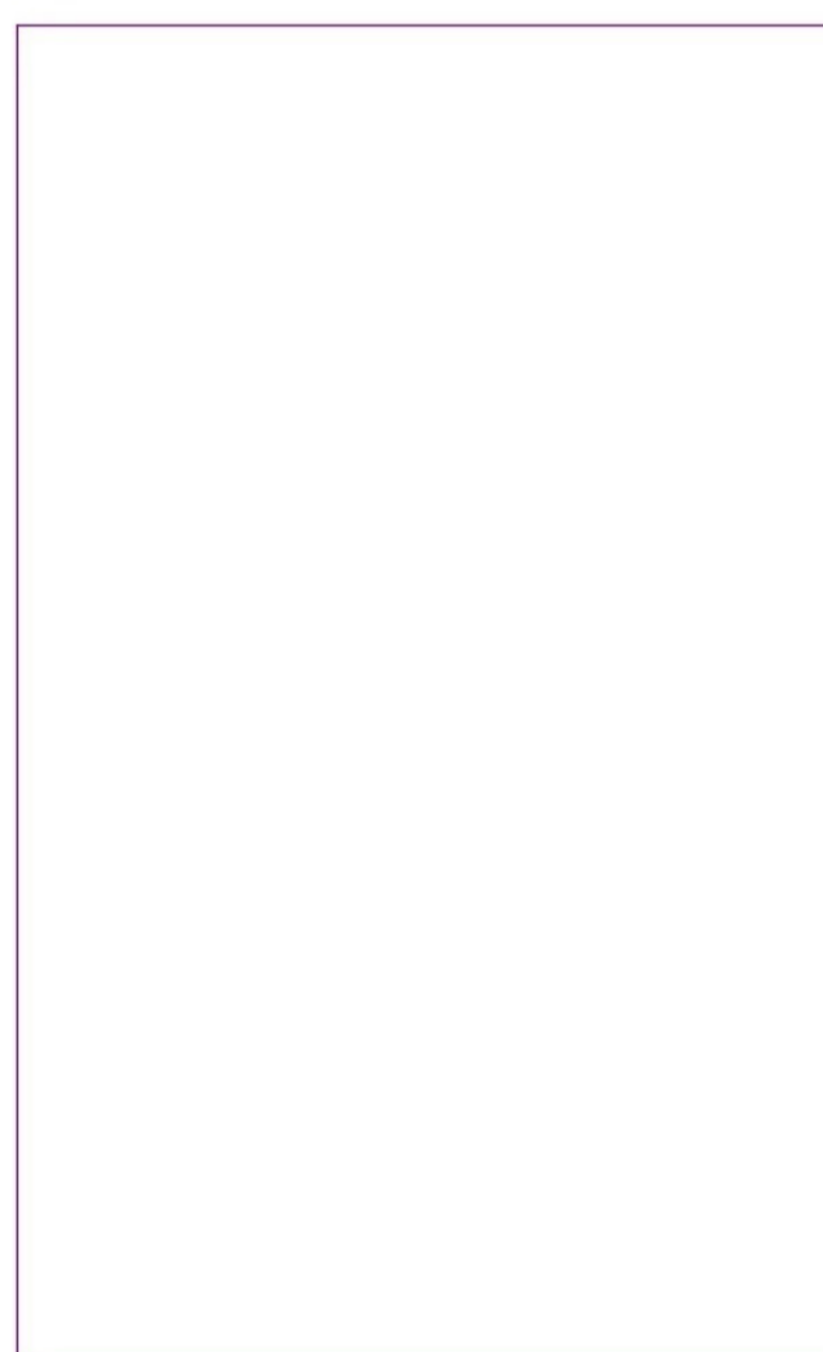
Operador: Grace Morales





- 54 TC-17
- 53 TMB-24
- 52 TMA-13
- 51 TMB-23
- 50 TC-16
- 49 TMA-12
- 48 TMB-22
- 47 TMB-21
- 46 TMA-11
- 45 TC-15
- 44 TMB-20
- 43 TC-14
- 42 TMB-19
- 41 TMA-10
- 40 TMB-18
- 39 TC-13
- 38 TMB-17
- 37 TMA-09
- 36 TMB-16
- 35 TC-12
- 34 TMA-08
- 33 TMB-15
- 32 TMB-14
- 31 TMA-07
- 30 TC-11
- 29 TMB-13
- 28 TMB-12
- 27 TC-10
- 26 TMB-11
- 25 TMA-06
- 24 TMB-10
- 23 TC-09
- 22 TMB-09
- 21 TMA-05
- 20 TMB-08
- 19 TC-08
- 18 TMB-07
- 17 TMA-04
- 16 TMB-06
- 15 TC-07
- 14 TMB-05
- 13 TC-06
- 12 TMA-03
- 11 TMB-04
- 10 TC-05
- 9 TMA-02
- 8 TMB-03
- 7 TC-04
- 6 TMB-02
- 5 TC-03
- 4 TMA-01
- 3 TMB-01
- 2 TC-02
- 1 TC-01
- 0 TC-00

LEYENDA ILUMINACION		
SÍMBOLO	DESCRIPCIÓN	UDS.
	RJ 306 LPC IKW (40)	36
	RJ 306 LF IKW (20)	0
	RJ 329HPC 2KW (12)	0
	RJ 710SX 2KW-10/25° (6)	0
	RJ 713SX 2KW-29/50° (12)	0
	RJ 611SX IKW-II/26° (6)	0
	STRAND SL 600W-5° (6)	0
	STRAND SL 600W-23/50° (18)	0
	STRAND SL 600W-15/35° (24)	10
	PAR 64(5)-IKW	20
	PAR 64(2)-IKW	0
	PAR 64(1)-IKW	0
	PAN ORION ASIM. I Kw (18)	0
	PAN IRIS ASIM. I Kw (24)	0
	Panorama asimetrico Led Zenyt 600	12
	STRAND CANTATA 1.2 (8)	X
	RJ 714SX 2KW-15/40° (24)	9
	RJ 613SX IKW-28/54° (17)	X
	ETC SFZoom 750W-25/50° (X)	X
	ETC SFZoom 750W-15/30° (X)	X
	Elation ARENA 7X30w RWBW 7 a 40°	34
	Ayrton Ghibli o XProfile	6
	Eurus	8
	Maquina de Niebla Hazer	2



LUCES DE CONTRA / BACKLIGHTS
 VARA XL-2, XL-4, XL-6 / XL-2, XL-4, XL-6 PIPE
 ELATION ARENA 7X30W - 7/40°



28 FESTIVAL INTERNACIONAL DE DANZA DE CANARIAS

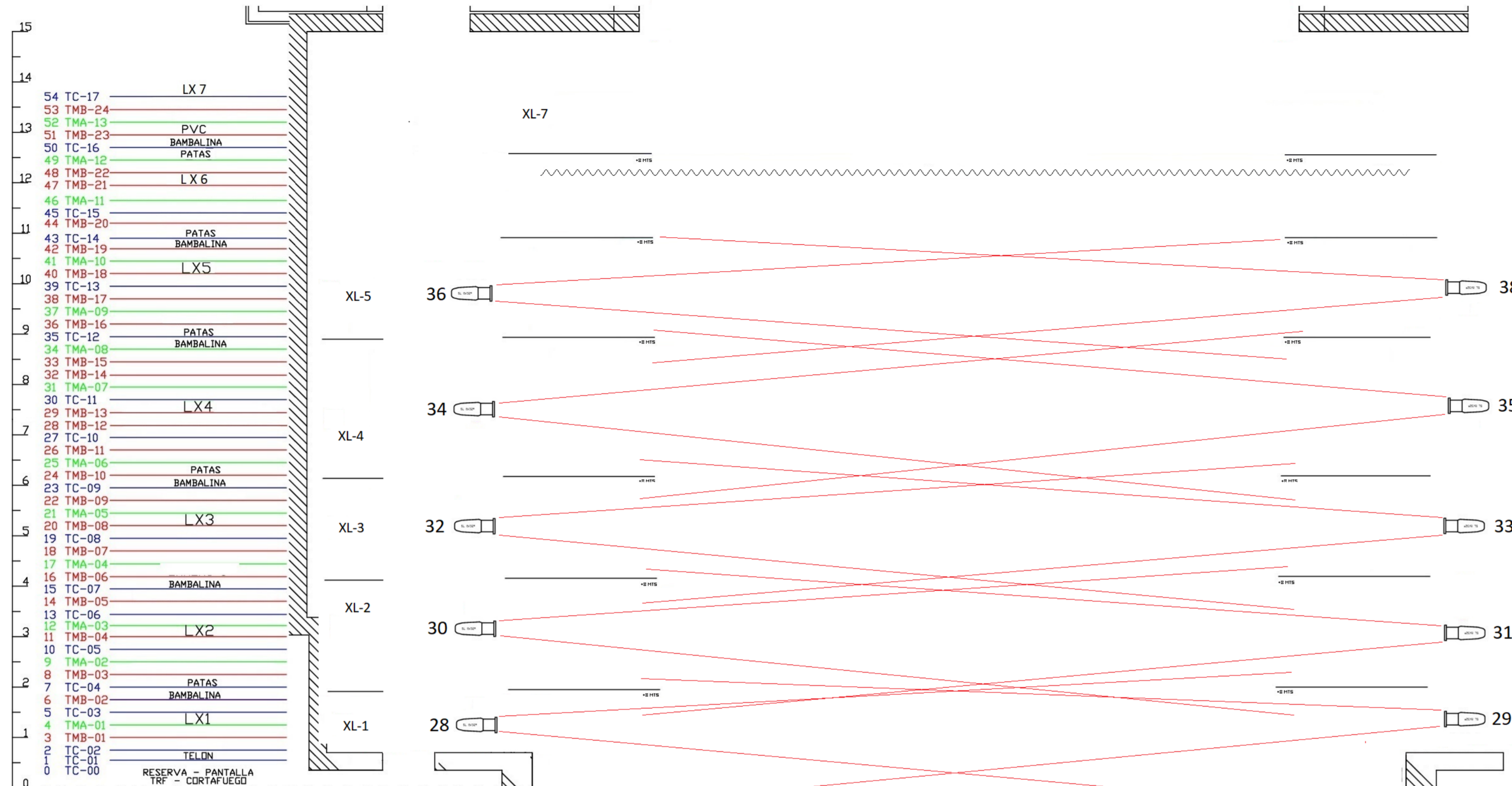
QUE TAL ESTAS PRODUCCION

Del 18 al 21 de octubre de 2023

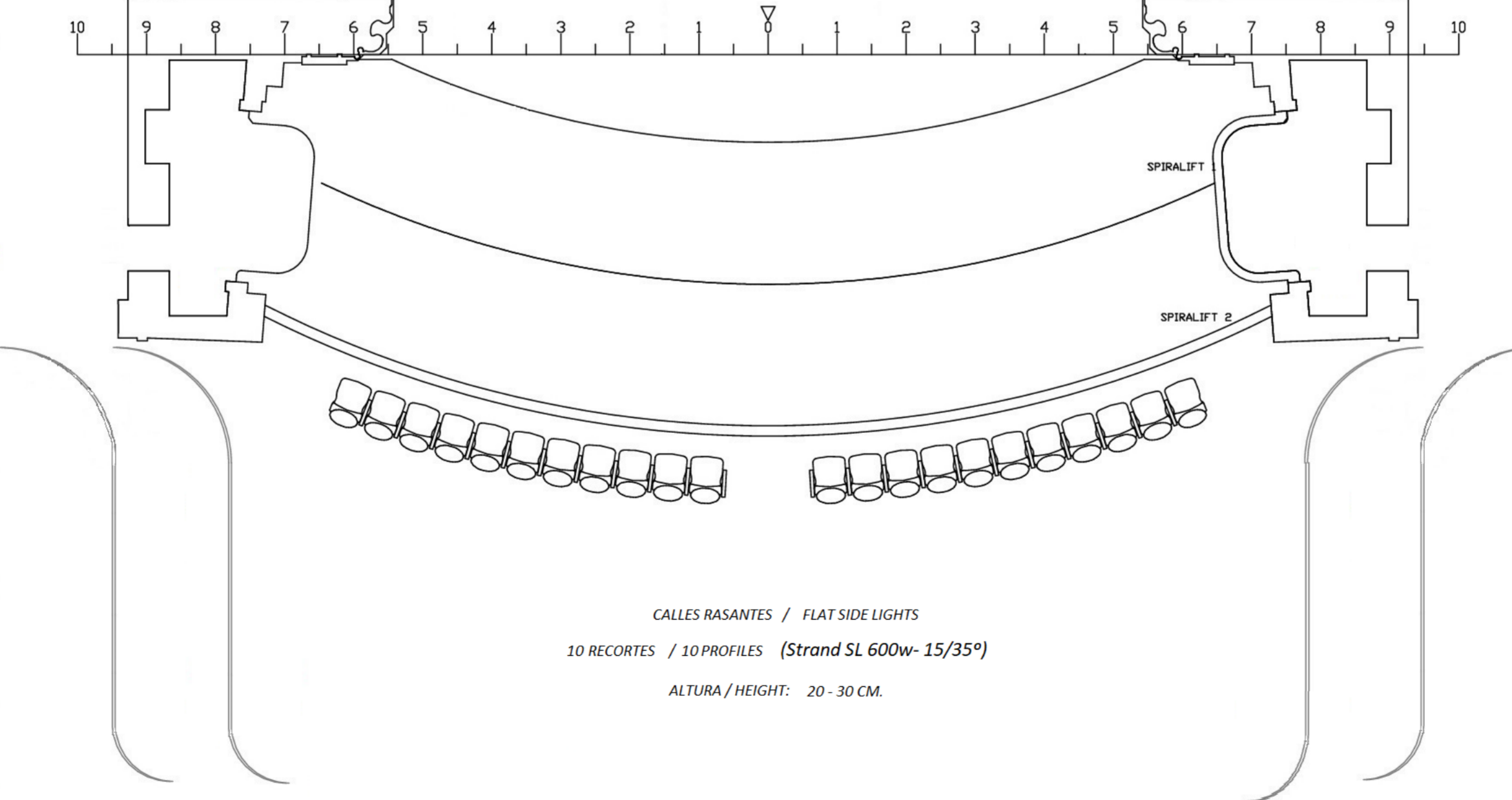
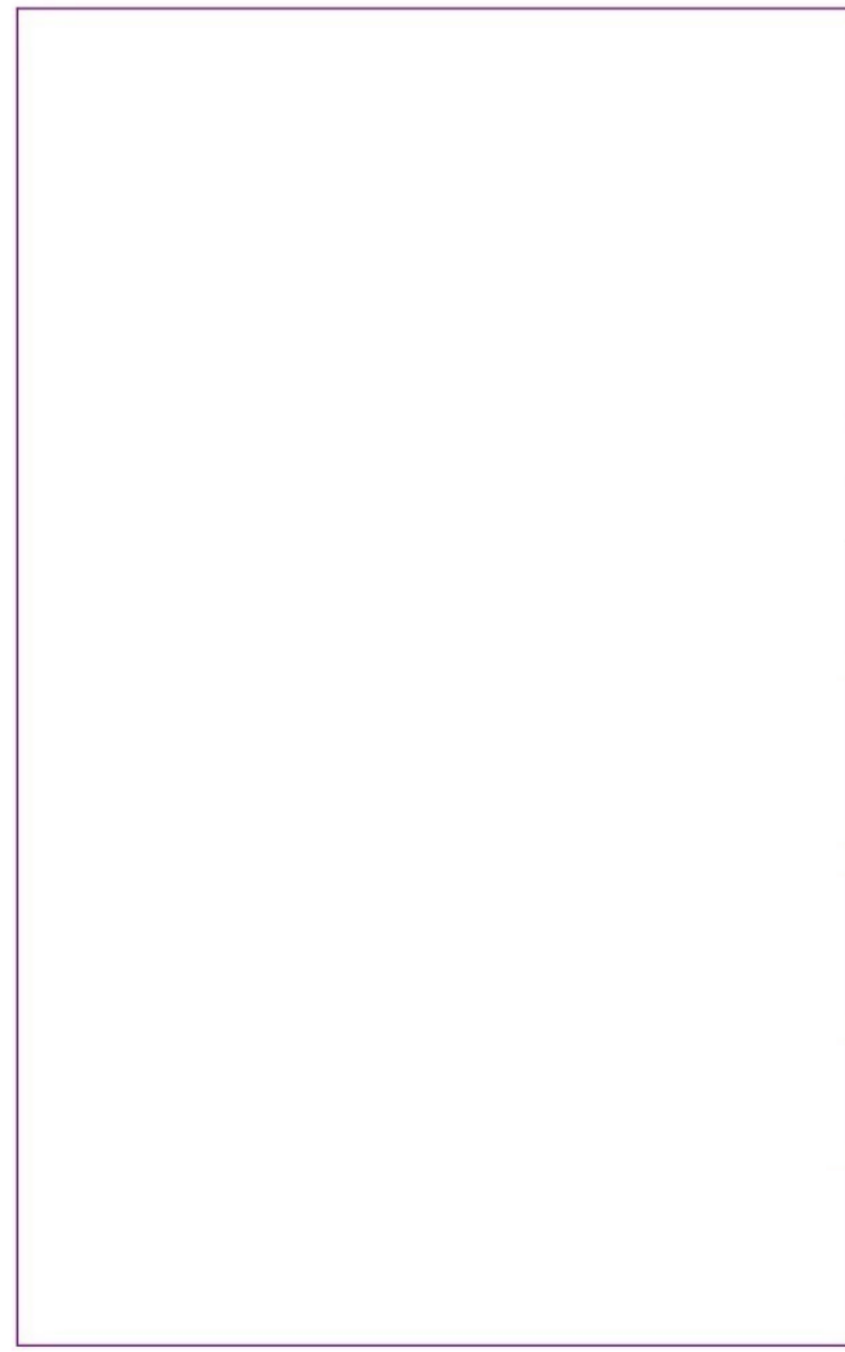
Teatro Perez Galdos

Diseño: Rafael Morán

Operador: Grace Morales



LEYENDA ILUMINACION		
SÍMBOLO	DESCRIPCIÓN	UDS.
	RJ 306 LPC IKW (40)	36
	RJ 306 LF IKW (20)	0
	RJ 329HPC 2KW (12)	0
	RJ 710SX 2KW-10/25° (6)	0
	RJ 713SX 2KW-29/50° (12)	0
	RJ 611SX IKW-II/26° (6)	0
	STRAND SL 600W-5° (6)	0
	STRAND SL 600W-23/50° (18)	0
	STRAND SL 600W-15/35° (24)	10
	PAR 64(5)-IKW	20
	PAR 64(2)-IKW	0
	PAR 64(1)-IKW	0
	PAN ORION ASIM. I KW (18)	0
	PAN IRIS ASIM. I KW (24)	0
	Panorama asimetrico Led Zenyt 600	12
	STRAND CANTATA 1.2 (8)	X
	RJ 714SX 2KW-15/40° (24)	9
	RJ 613SX IKW-28/54° (17)	X
	ETC SFZoom 750W-25/50° (X)	X
	ETC SFZoom 750W-15/30° (X)	X
	Elation ARENA 7X30w RWBW 7 a 40°	34
	Ayrton Ghibli o XProfile	6
	Eurus	8
	Maquina de Niebla Hazer	2



CALLES RASANTES / FLAT SIDE LIGHTS
 10 RECORTES / 10 PROFILES (Strand SL 600w- 15/35°)
 ALTURA / HEIGHT: 20 - 30 CM.



28 FESTIVAL INTERNACIONAL DE DANZA DE CANARIAS

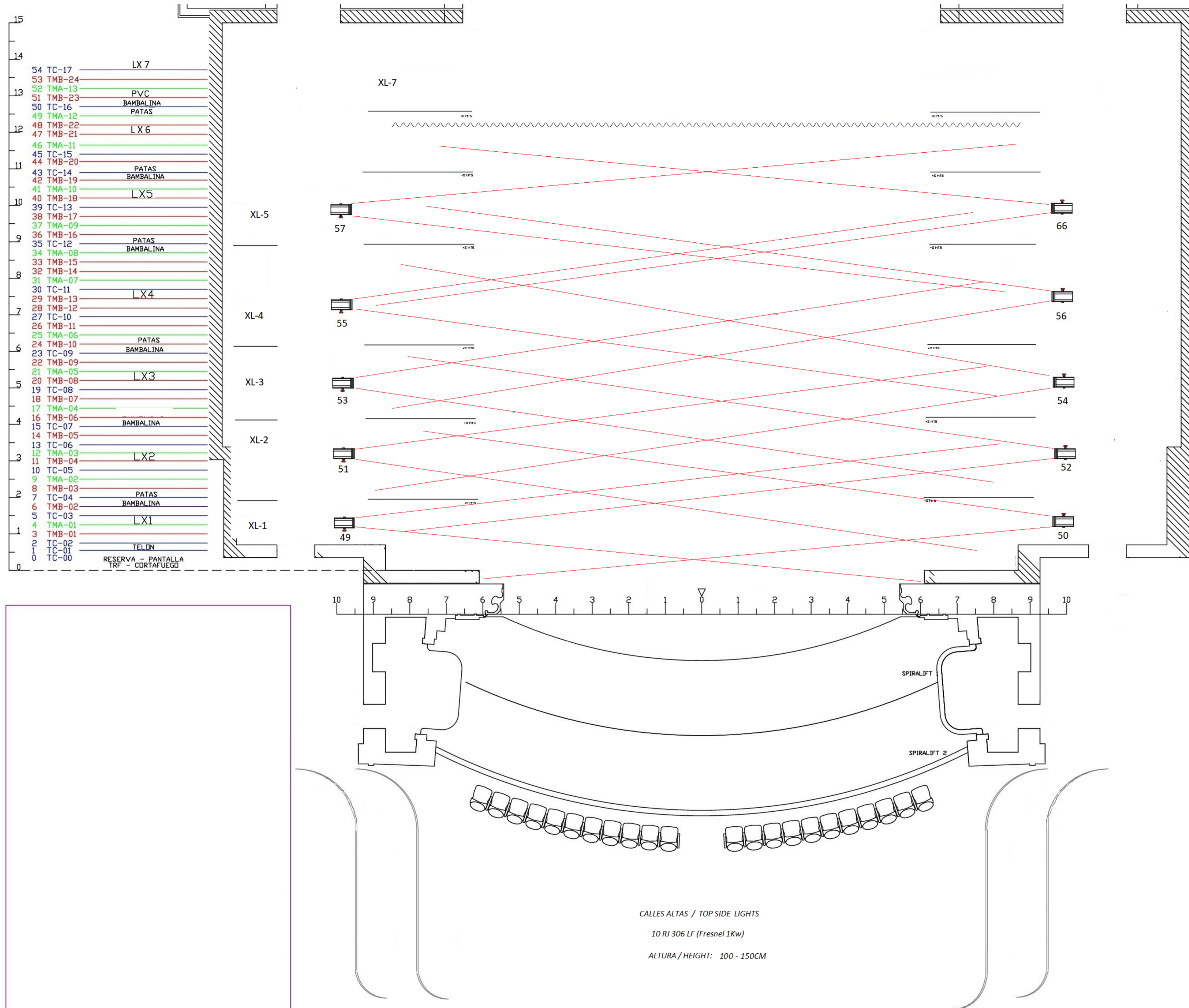
QUE TAL ESTAS PRODUCCION

Del 18 al 21 de octubre de 2023

Teatro Perez Galdos

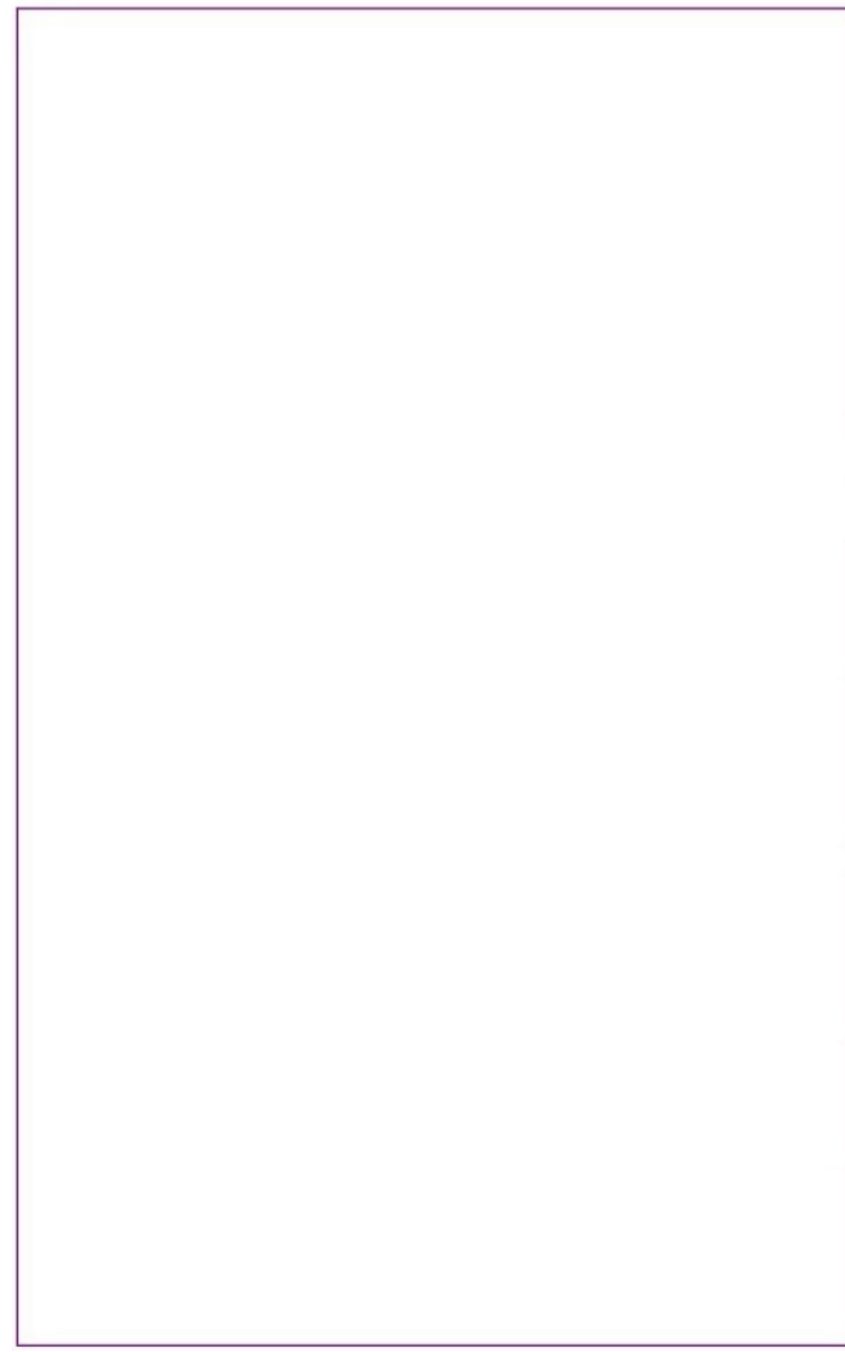
Diseño: Rafael Morán

Operador: Grace Morales



15		
14		
54 TC-17	LX 7	
53 TMB-24		
52 TMA-13	PVC	
51 TMB-23	BAMBALINA	
50 TC-16	PATAS	
49 TMA-12		
48 TMB-22	LX 6	
47 TMB-21		
46 TMA-11		
45 TC-15		
44 TMB-20		
43 TC-14	PATAS	
42 TMB-19	BAMBALINA	
41 TMA-10	LX 5	
40 TMB-18		
39 TC-13		
38 TMB-17		
37 TMA-09		
36 TMB-16		
35 TC-12	PATAS	
34 TMA-08	BAMBALINA	
33 TMB-15		
32 TMB-14		
31 TMA-07		
30 TC-11	LX 4	
29 TMB-13		
28 TMB-12		
27 TC-10		
26 TMB-11		
25 TMA-06		
24 TMB-10	PATAS	
23 TC-09	BAMBALINA	
22 TMB-09		
21 TMA-05	LX 3	
20 TMB-08		
19 TC-08		
18 TMB-07		
17 TMA-04		
16 TMB-06		
15 TC-07	BAMBALINA	
14 TMB-05		
13 TC-06		
12 TMA-03	LX 2	
11 TMB-04		
10 TC-05		
9 TMA-02		
8 TMB-03		
7 TC-04	PATAS	
6 TMB-02	BAMBALINA	
5 TC-03	LX 1	
4 TMA-01		
3 TMB-01		
2 TC-02	TELON	
1 TC-01		
0 TC-00	RESERVA - PANTALLA TRF - CORTAFUEGO	

LEYENDA ILUMINACION		
SÍMBOLO	DESCRIPCIÓN	UDS.
	RJ 306 LPC IKW (40)	36
	RJ 306 LF IKW (20)	0
	RJ 329HPC 2KW (12)	0
	RJ 710SX 2KW-10/25° (6)	0
	RJ 713SX 2KW-29/50° (12)	0
	RJ 611SX IKW-II/26° (6)	0
	STRAND SL 600W-5° (6)	0
	STRAND SL 600W-23/50° (18)	0
	STRAND SL 600W-15/35° (24)	10
	PAR 64(5)-IKW	20
	PAR 64(2)-IKW	0
	PAR 64(1)-IKW	0
	PAN ORION ASIM. I Kw (18)	0
	PAN IRIS ASIM. I Kw (24)	0
	Panorama asimetrico Led Zenyt 600	12
	STRAND CANTATA 1.2 (8)	X
	RJ 714SX 2KW-15/40° (24)	9
	RJ 613SX IKW-28/54° (17)	X
	ETC SFZoom 750W-25/50° (X)	X
	ETC SFZoom 750W-15/30° (X)	X
	Elation ARENA 7X30w RWBW 7 a 40°	34
	Ayrton Ghibli o XProfile	6
	Eurus	8
	Maquina de Niebla Hazer	2



CALLES ALTAS / TOP SIDE LIGHTS
 10 RJ 306 LF (Fresnel 1Kw)
 ALTURA / HEIGHT: 100 - 150CM



28 FESTIVAL INTERNACIONAL DE DANZA DE CANARIAS

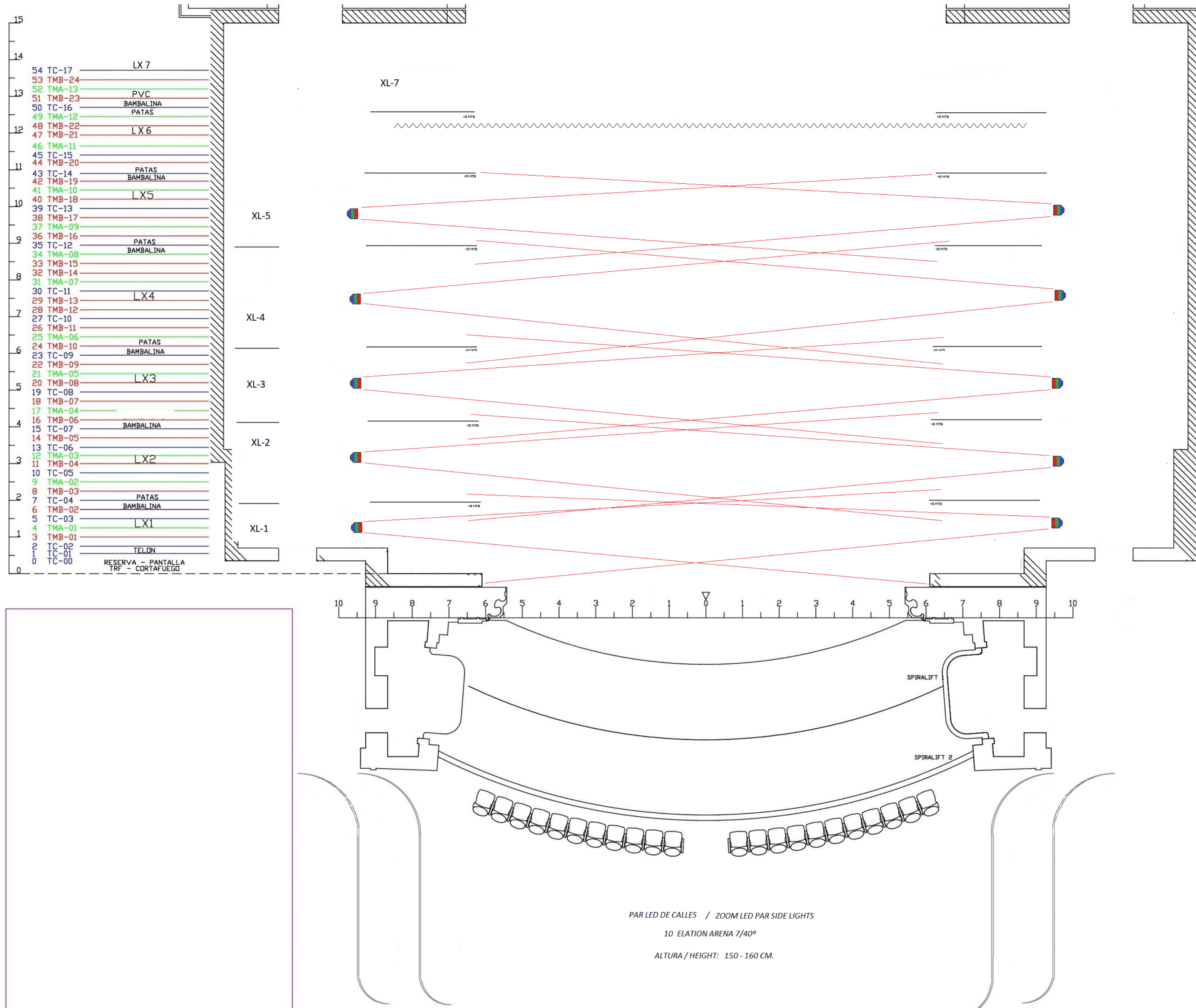
QUE TAL ESTAS PRODUCCION

Del 18 al 21 de octubre de 2023

Teatro Perez Galdos

Diseño: Rafael Morán

Operador: Grace Morales



LEYENDA ILUMINACION		
SÍMBOLO	DESCRIPCIÓN	UDS.
	RJ 306 LPC IKW (40)	36
	RJ 306 LF IKW (20)	0
	RJ 329HPC 2KW (12)	0
	RJ 710SX 2KW-10/25° (6)	0
	RJ 713SX 2KW-29/50° (12)	0
	RJ 611SX IKW-II/26° (6)	0
	STRAND SL 600W-5° (6)	0
	STRAND SL 600W-23/50° (18)	0
	STRAND SL 600W-15/35° (24)	10
	PAR 64(5)-IKW	20
	PAR 64(2)-IKW	0
	PAR 64(1)-IKW	0
	PAN ORION ASIM. I Kw (18)	0
	PAN IRIS ASIM. I Kw (24)	0
	Panorama asimetrico Led Zenyt 600	12
	STRAND CANTATA 1.2 (8)	X
	RJ 714SX 2KW-15/40° (24)	9
	RJ 613SX IKW-28/54° (17)	X
	ETC SFZoom 750W-25/50° (X)	X
	ETC SFZoom 750W-15/30° (X)	X
	Elation ARENA 7X30w RWBW 7 a 40°	34
	Ayrton Ghibli o XProfile	6
	Eurus	8
	Maquina de Niebla Hazer	2

28 FESTIVAL INTERNACIONAL DE DANZA DE CANARIAS

QUE TAL ESTAS PRODUCCION

Del 18 al 21 de octubre de 2023

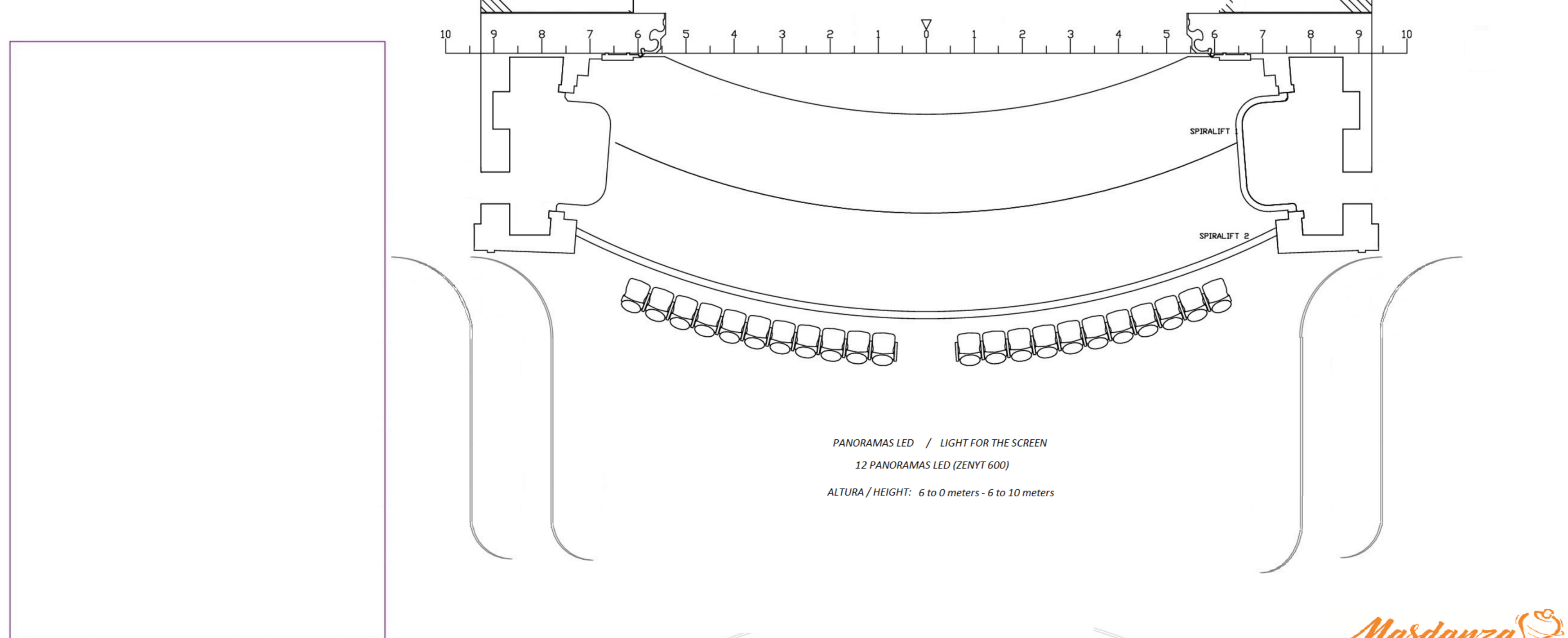
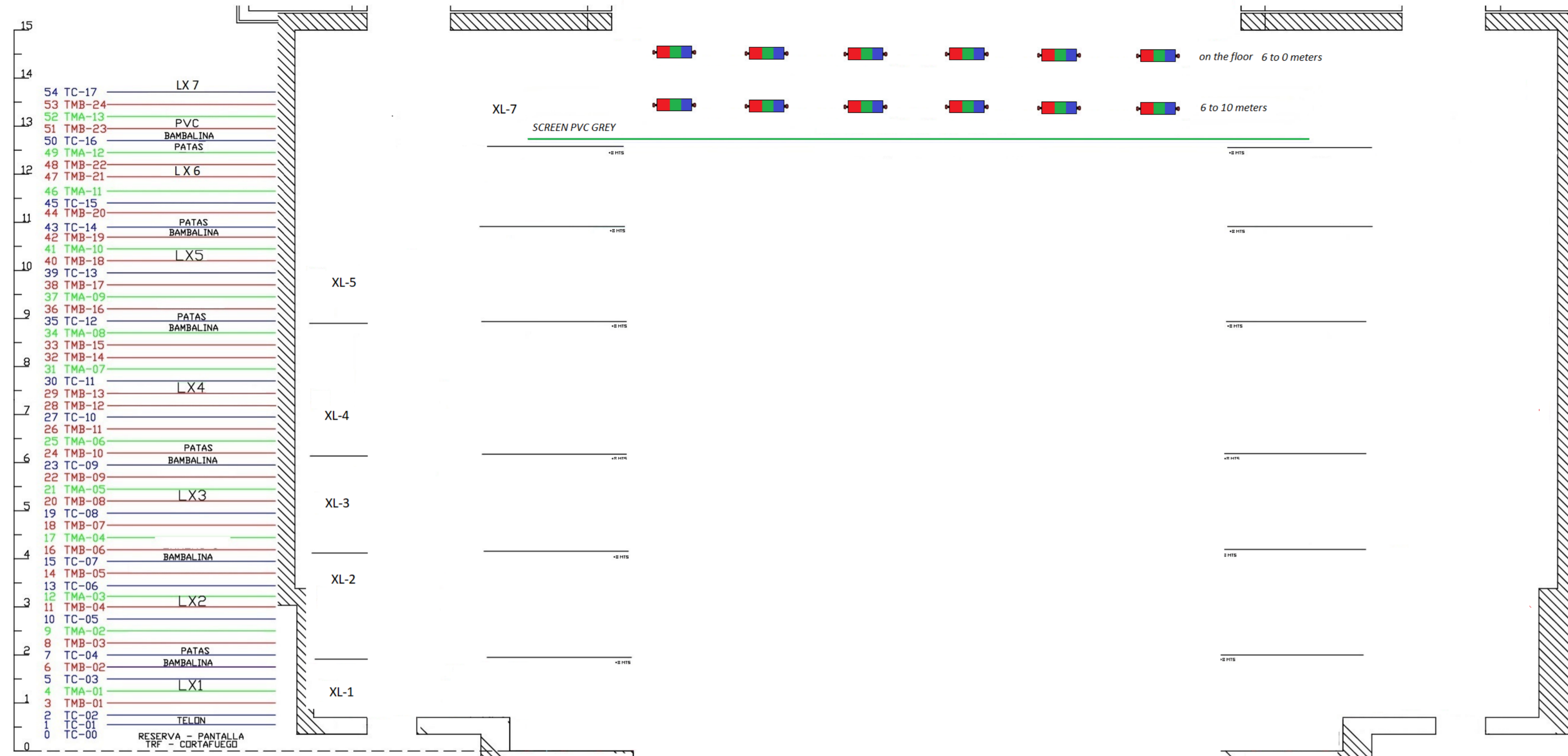
Teatro Perez Galdos

Diseño: Rafael Morán

Operador: Grace Morales

PAR LED DE CALLES / ZOOM LED PAR SIDE LIGHTS
 10 ELATION ARENA 7/40°
 ALTURA / HEIGHT: 150 - 160 CM.





PANORAMAS LED / LIGHT FOR THE SCREEN
 12 PANORAMAS LED (ZENYT 600)
 ALTURA / HEIGHT: 6 to 0 meters - 6 to 10 meters

LEYENDA ILUMINACION		
SÍMBOLO	DESCRIPCIÓN	UDS.
	RJ 306 LPC IKW (40)	36
	RJ 306 LF IKW (20)	0
	RJ 329HPC 2KW (12)	0
	RJ 710SX 2KW-10/25° (6)	0
	RJ 713SX 2KW-29/50° (12)	0
	RJ 611SX IKW-II/26° (6)	0
	STRAND SL 600W-5° (6)	0
	STRAND SL 600W-23/50° (18)	0
	STRAND SL 600W-15/35° (24)	10
	PAR 64(5)-IKW	20
	PAR 64(2)-IKW	0
	PAR 64(1)-IKW	0
	PAN ORION ASIM. I Kw (18)	0
	PAN IRIS ASIM. I Kw (24)	0
	Panorama asimetrico Led Zenyt 600	12
	STRAND CANTATA 1.2 (8)	X
	RJ 714SX 2KW-15/40° (24)	9
	RJ 613SX IKW-28/54° (17)	X
	ETC SFZoom 750W-25/50° (X)	X
	ETC SFZoom 750W-15/30° (X)	X
	Elation ARENA 7X30w RWBW 7 a 40°	34
	Ayrton Ghibli o XProfile	6
	Eurus	8
	Maquina de Niebla Hazer	2

28 FESTIVAL INTERNACIONAL DE DANZA DE CANARIAS

QUE TAL ESTAS PRODUCCION

Del 18 al 21 de octubre de 2023

Teatro Perez Galdos

Diseño: Rafael Morán

Operador: Grace Morales



